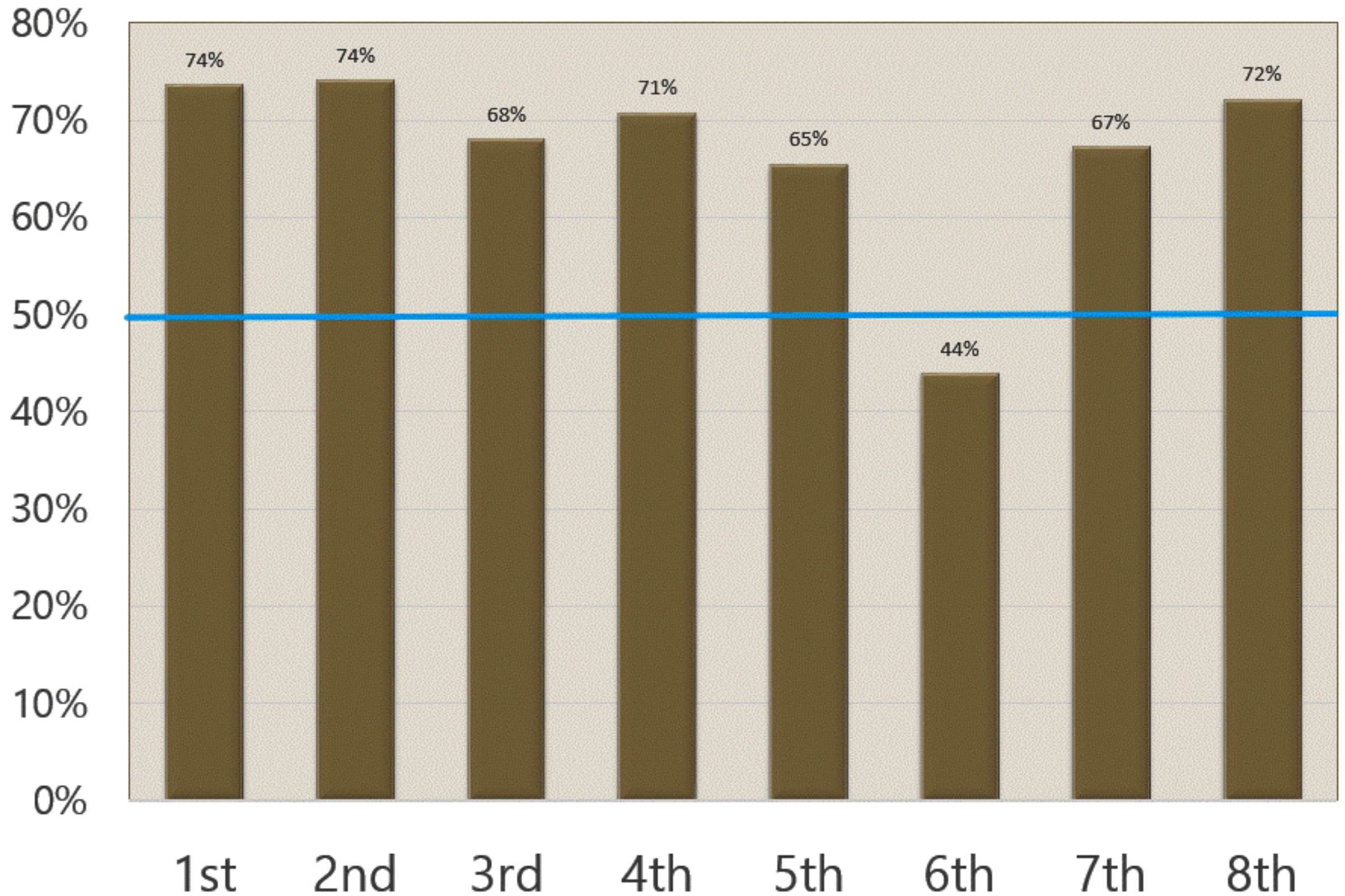


# District Courts Jury Yield FY20



# Juror Use by District Courts

Jul 1, 2019 - Jun 30, 2020	Statewide	1st	2nd	3rd	4th	5th	6th	7th	8th
<b>TOTAL JURORS SELECTED</b>	<b>204,482</b>	<b>9,663</b>	<b>23,073</b>	<b>106,561</b>	<b>20,477</b>	<b>15,520</b>	<b>4,740</b>	<b>5,630</b>	<b>7,079</b>
<b>SELECTED BUT UNAVAILABLE</b>	<b>67,614</b>	<b>2,547</b>	<b>5,978</b>	<b>34,006</b>	<b>5,986</b>	<b>5,360</b>	<b>2,659</b>	<b>1,845</b>	<b>1,968</b>
<b>SELECTED QUALIFIED AND AVAILABLE</b>	<b>136,868</b>	<b>7,116</b>	<b>17,095</b>	<b>72,555</b>	<b>14,491</b>	<b>10,160</b>	<b>2,081</b>	<b>3,785</b>	<b>5,111</b>
<b>Not Summoned</b>	<b>77,255</b>	<b>6,522</b>	<b>13,251</b>	<b>52,764</b>	<b>9,629</b>	<b>7,737</b>	<b>1,616</b>	<b>3,149</b>	<b>4,224</b>
<b>Summoned and Served or Reported</b>	<b>42,688</b>	<b>594</b>	<b>3,844</b>	<b>19,791</b>	<b>4,862</b>	<b>2,423</b>	<b>465</b>	<b>636</b>	<b>887</b>
Alternate Juror or Reported But Did Not Serve	39,760	563	3,622	18,748	4,576	2,276	433	570	816
Juror Served and Deliberated	2,902	31	222	1,043	286	147	32	66	71
<b>JURY YIELD*</b>	<b>67%</b>	<b>74%</b>	<b>74%</b>	<b>68%</b>	<b>71%</b>	<b>65%</b>	<b>44%</b>	<b>67%</b>	<b>72%</b>
*Selected Qualified and Available/Total Jurors Selected									